

## CONVERTER PROBLEM FLOW CHART

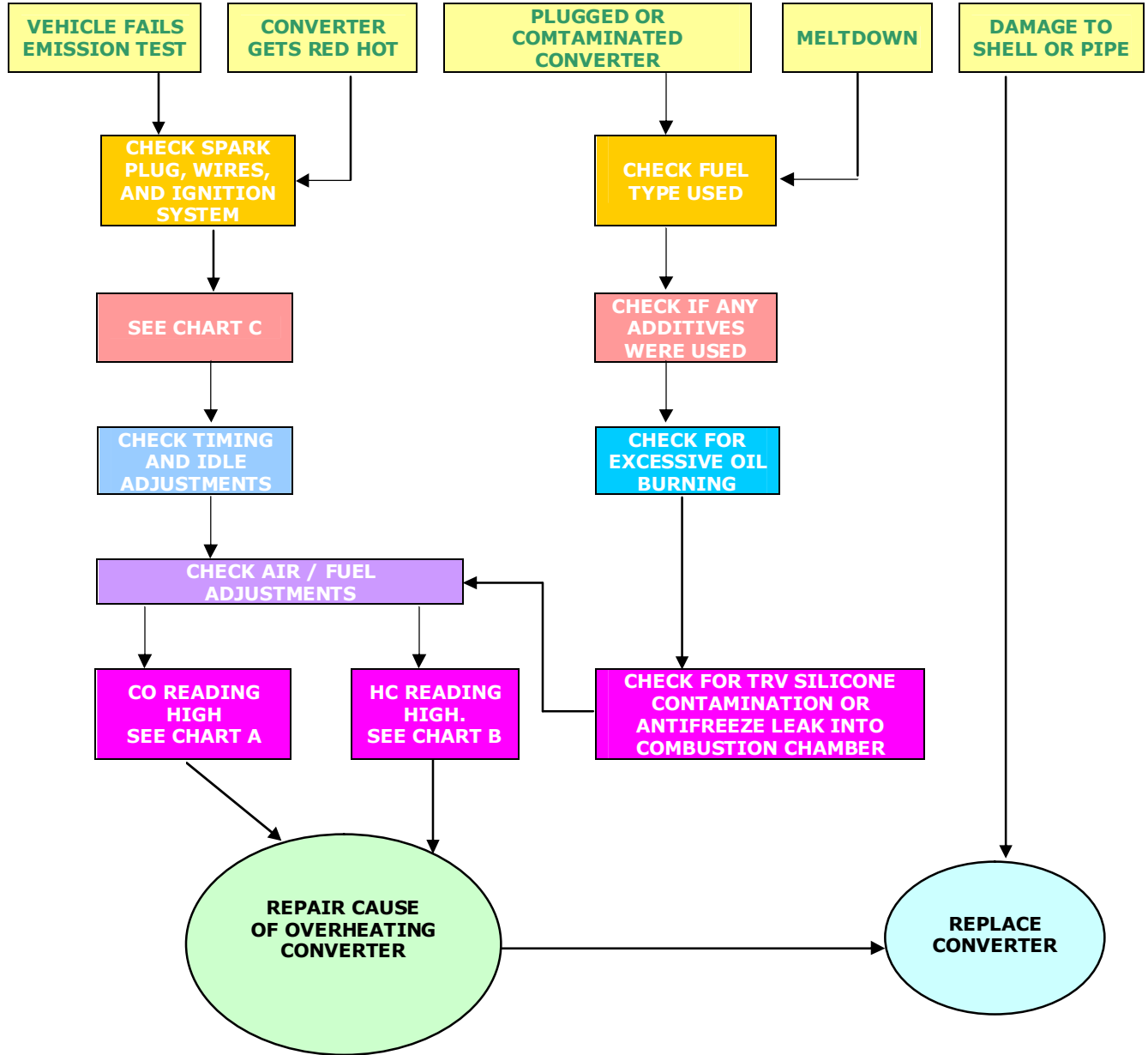


CHART A POSSIBLE HIGH CO READING CAUSES	CHART B POSSIBLE HIGH HC READING CAUSES	CHART C FAULTY IGNITION COMPONENTS THAT CAN DAMAGE A CONVERTER
<ul style="list-style-type: none"> <li>▪ Improper idle speed or mixture</li> <li>▪ Inoperative air pump or air injection</li> <li>▪ Inoperative choke</li> <li>▪ Faulty PVC</li> <li>▪ Faulty gas check valve</li> <li>▪ Faulty diverter valve</li> <li>▪ Faulty O<sub>2</sub> sensor</li> <li>▪ Fuel system malfunction</li> <li>▪ Faulty converter</li> </ul>	<ul style="list-style-type: none"> <li>▪ Ignition system malfunction</li> <li>▪ Vacuum leak</li> <li>▪ Fuel system malfunction</li> <li>▪ Engine mechanical damage- worn rings or burnt valves</li> <li>▪ Faulty O<sub>2</sub> sensor</li> <li>▪ Faulty canister purge valve</li> <li>▪ Overly rich fuel mixture</li> <li>▪ Faulty converter</li> <li>▪ Faulty PVC valve</li> </ul>	<ul style="list-style-type: none"> <li>▪ Cracked distributor cap</li> <li>▪ Faulty coil</li> <li>▪ Faulty spark plug wires</li> <li>▪ Fouled plugs</li> <li>▪ Faulty rotor</li> </ul>